



اللوفر أبو ظبي
LOUVRE ABU DHABI

Residences
SAADIYAT GROVE





EVERYTHING WE DO COMES FROM THE HEART

ALDAR IS ONE OF THE MOST TRUSTED AND RECOGNISED REAL-ESTATE LIFESTYLE DEVELOPERS IN THE UAE. OUR GOAL ISN'T SIMPLY TO BUILD PROPERTIES. WE STRIVE TO SHAPE COMMUNITIES THAT PEOPLE LOVE TO LIVE IN. COMMUNITIES THAT BECOME HOMES, BRIMMING WITH LIFE AND EVERYTHING WE LOVE. BECAUSE HOME ISN'T JUST A PLACE, IT'S A FEELING. AND THAT'S WHAT WE PROMISE TO DELIVER TO YOU EVERY DAY.

REVENUE
AED8.58 BN
FY 2021

INVESTMENT
PORTFOLIO INCREASE
AED 1.0 BN
FY 2021

NET PROFIT
AED 2.33 BN
FY 2020

REVENUE SALES
AED 7.2 BN
FY 2021





A ONE-OF-A-KIND PARTNERSHIP

FOR THE FIRST TIME EVER, LOUVRE ABU DHABI IS LENDING ITS NAME TO A RESIDENTIAL DEVELOPMENT, AS IT PARTNERS WITH ABU DHABI'S LARGEST DEVELOPER, ALDAR PROPERTIES. TOGETHER, THESE TWO ICONIC BRANDS ARE REDEFINING THE WAY IN WHICH LIFE AND ART CAN INTERTWINE.



ABU DHABI, THE CITY WE CALL HOME

ABU DHABI IS A CITY WITH HEART. PEOPLE FROM ALL OVER THE WORLD HAVE BEEN DRAWN TO ITS NATURAL BEAUTY, VIBRANT CULTURAL SCENE, INSPIRING HERITAGE AND DYNAMIC BUSINESS LANDSCAPE. IT IS THE CAPITAL OF THE UAE AND A PLACE THAT PEOPLE LOVE TO CALL HOME.





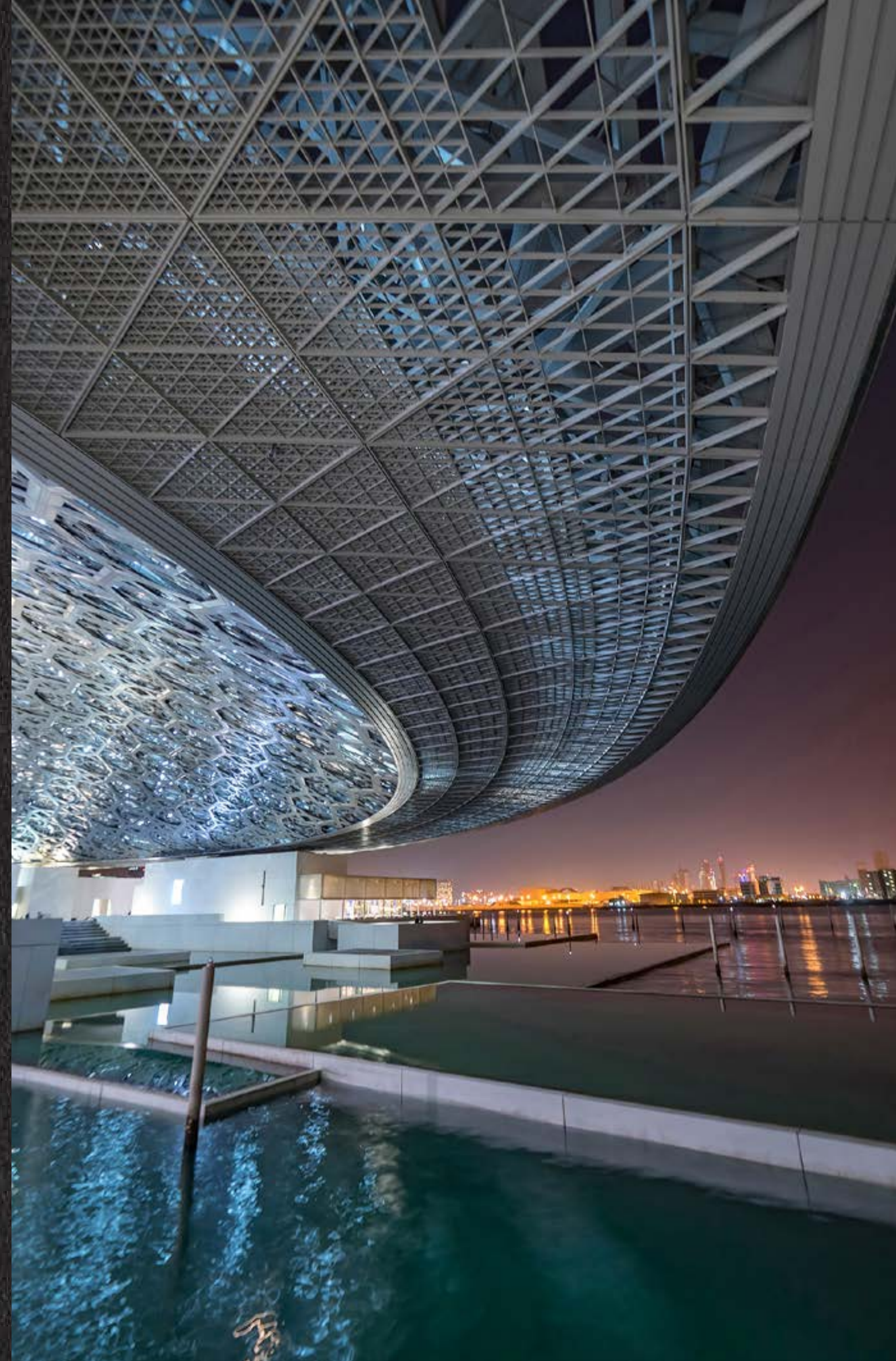
THE BOHEMIAN - PAINTING BY ÉDOUARD MANET

INSPIRATION IS IN OUR NATURE AND EVERYWHERE ELSE

WHAT MORE COULD BE ASKED OF A TROPICAL ISLAND, THAN TURQUOISE WATERS, WHITE-SAND BEACHES, AND EFFORTLESS LUXURY ON EVERY CORNER? ON SAADIYAT, THE ANSWER IS UNPARALLELED INSPIRATION.

DESIGNATED AS ABU DHABI'S CULTURAL DISTRICT, SAADIYAT ISLAND IS HOME TO ZAYED NATIONAL MUSEUM, GUGGENHEIM ABU DHABI AND THE SPECTACULAR LOUVRE ABU DHABI.

AT THE CENTRE OF IT ALL, LIES A DESTINATION THAT IS REDEFINING THE UAE'S ROLE IN GLOBAL CULTURE.



WHERE EVERY SQUARE INCH
ADDS QUALITY TO LIFE





Corniche Rd, Abu Dhabi

20 Min


 اللوفر أبوظبي
LOUVRE ABU DHABI
Residences
 SAADIYAT GROVE

SAADIYAT BEACH CLUB

SAADIYAT BEACH GOLF CLUB

GUGGENHEIM ABU DHABI

SAADIYAT GROVE

MAMSHA AL SAADIYAT

JAWAHER SAADIYAT

LOUVRE ABU DHABI

ZAYED NATIONAL MUSEUM

MANARAT AL SAADIYAT

CULTURAL DISTRICT

SAADIYAT ISLAND

MARINA DISTRICT

NYU ABU DHABI

ABU DHABI



Yas Island
15 Min

Abu Dhabi Airport
20 Min

Dubai
70 Min

15 Min

THE BRIDGES

SARAYA

AL MARYAH ISLAND

REEM CENTRAL PARK

15 Min

MEERA

BURJ MOHAMMED BIN RASHID

THE GATE & ARC TOWERS

WORLD TRADE CENTER

REEM ISLAND

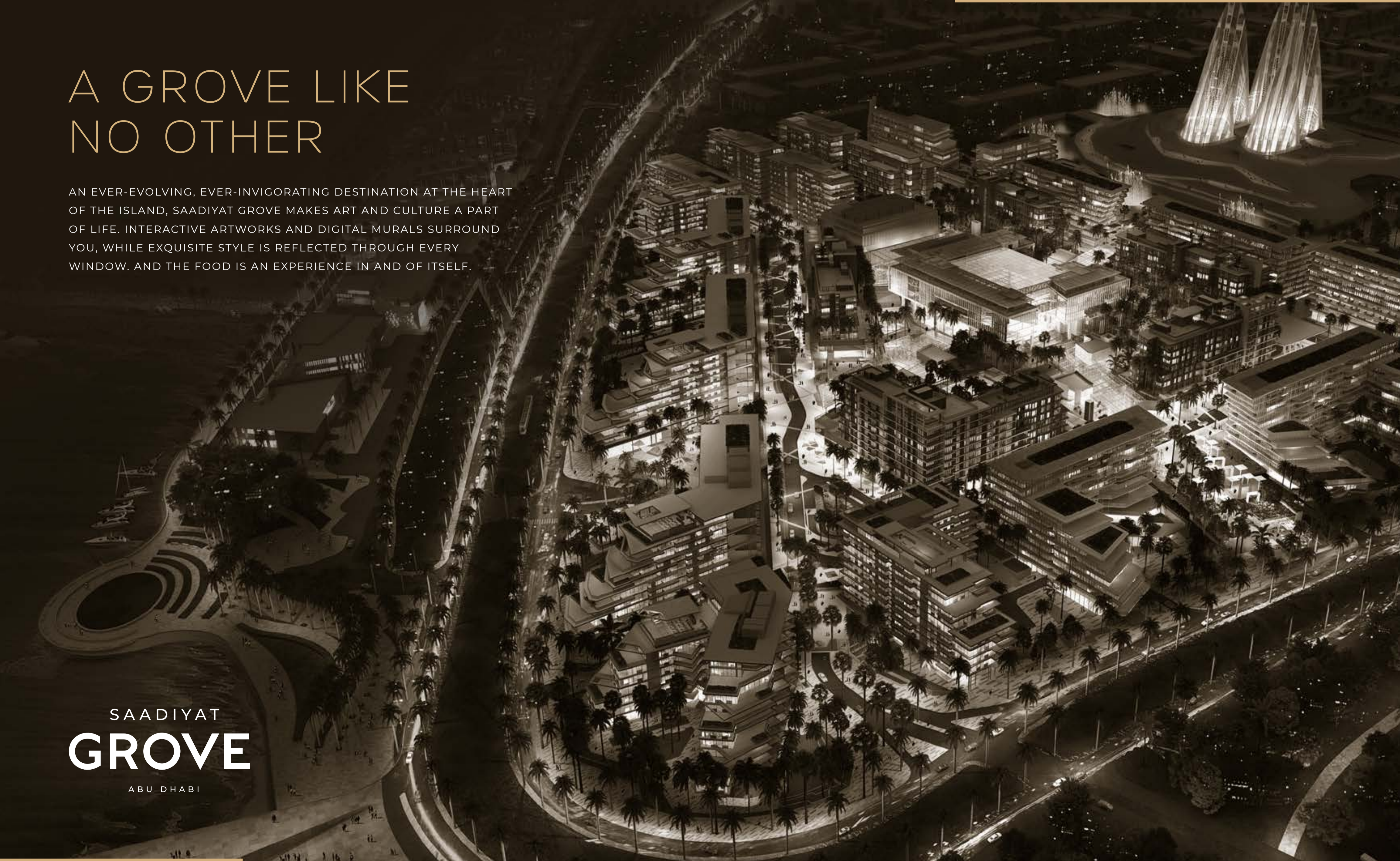
KHALIDIYA VILLAGE

BANIYAS TOWERS

A GROVE LIKE NO OTHER

AN EVER-EVOLVING, EVER-INVIGORATING DESTINATION AT THE HEART OF THE ISLAND, SAADIYAT GROVE MAKES ART AND CULTURE A PART OF LIFE. INTERACTIVE ARTWORKS AND DIGITAL MURALS SURROUND YOU, WHILE EXQUISITE STYLE IS REFLECTED THROUGH EVERY WINDOW. AND THE FOOD IS AN EXPERIENCE IN AND OF ITSELF.

SAADIYAT
GROVE
ABU DHABI





1
ZAYED NATIONAL MUSEUM

THE UNITED ARAB EMIRATES' PREMIER MUSEUM, SHARING THE COUNTRY'S HISTORY AND THE STORY OF OUR LATE FOUNDING FATHER, SHEIKH ZAYED BIN SULTAN AL NAHYAN

2
ABRAHAMIC FAMILY HOUSE

A BEACON OF MUTUAL UNDERSTANDING, HARMONIOUS COEXISTENCE AND PEACE AMONG PEOPLE OF FAITH AND GOODWILL

3
LOUVRE ABU DHABI

THE ICONIC NAME, REPRESENTING THE HISTORY OF OUR WORLD AND ALL ITS PEOPLE, AS TOLD THROUGH ART

4
MAMSHA AL SAADIYAT

AN EXCLUSIVE BEACHFRONT COMMUNITY FEATURING A PRISTINE 1.4KM WHITE SANDY BEACH AND BREATHTAKING SEA VIEWS

5
GUGGENHEIM ABU DHABI

THE WORLD'S LARGEST GUGGENHEIM MUSEUM, FOCUSING ON MODERN AND CONTEMPORARY ART, FROM NORTH AFRICA TO SOUTH ASIA

WHERE EVENINGS COME
ALIVE WITH EXPERIENCES



BE EFFORTLESSLY TRANSPORTED
AND PROFOUNDLY MOVED



A PLACE FOR LAUGHTER
AND EVERY FLAVOUR



WHERE EVERY VIEW
LEADS TO WONDER





TAKE A SUNSET STROLL
ALONG STREETS LINED
WITH ART

A HOME DESIGNED
TO ENERGISE LIFE





HEAD OF A PTOLEMAIC QUEEN: CLEOPATRA VII

CA. 305 BCE-30 BCE

THIS MONUMENTAL PORTRAIT OF A QUEEN,
CARVED IN THE GUISE OF THE GODDESS ISIS,
IS A MOST REMARKABLE ILLUSTRATION OF IT.

A RETAIL EXPERIENCE REIMAGINED

AESTHETIC BEAUTY FLOWS THROUGH THE STREETS, OFFERING HAUTE COUTURE ON EVERY CORNER, AS WELL AS THE LATEST TRENDS IN TECHNOLOGY AND LIFESTYLE. THIS IS WHERE ARTISTRY IS WOVEN INTO EVERY ITEM AND EACH PURCHASE IS DESIGNED TO INSPIRE.

INTERNATIONAL FASHION BRANDS

F&B OUTLETS

PERSONAL SHOPPER SERVICE

GROCERY SHOPPING SERVICE

SHOPPING BAG DROP-OFF



ELEGANT AND LUXURY FASHION
AT YOUR DOORSTEP



A LIFESTYLE INSPIRED BY
ART AND CULTURE



FOR EFFORTLESS
MORNINGS & ELEGANT
AFTERNOONS

ember Café



EVERY
DAY
INSPIRED





GELB-ROT-BLAU - PAINTING BY WASSILY KANDINSKY

A VIEW DESIGNED FOR A GALLERY

FEW PLACES ON EARTH OFFER STUNNING NATURAL BEAUTY, AS WELL AS UNRIVALLED HERITAGE AND ARTISTRY, THE MOMENT YOU LOOK OUT THE WINDOW. BUT THIS IS THE EVERYDAY REALITY OF LOUVRE ABU DHABI RESIDENCES. A DEVELOPMENT THAT WEAVES THE STYLE AND PRESTIGE OF THE WORLD-FAMOUS MUSEUM INTO ITS VERY CORE.





EVERY DETAIL HAS BEEN METICULOUSLY CRAFTED TO CAPTURE THE ESSENCE OF ARTISTRY — FROM EXPANSIVE TERRACES AND BALCONIES TO FINISHES OF THE HIGHEST QUALITY.



THE LOBBY OPENS UP TO DOUBLE-HEIGHT CEILINGS AND WORLD-FAMOUS ART, WITH PIECES INSPIRED BY THE COLLECTION OF LOUVRE ABU DHABI. GLASS ELEVATORS CARRY YOU TO THE RESIDENTIAL HEIGHTS, WHILE YOU ENJOY PANORAMIC VIEWS OF THE SURROUNDING SPLENDOUR.

A modern, minimalist interior space, likely a hotel lobby or lounge. The room features a large, multi-story glass wall on the right side, which allows natural light to flood the space. In the foreground, there is a dark, rectangular pool or water feature. To the left, a large, abstract sculpture of two figures stands on a platform. In the center, a reception desk with a marble top is visible, with two people standing behind it. The lounge area is furnished with light-colored, round sofas and armchairs, along with a dark wood coffee table. A tall, dark floor lamp is positioned near the lounge. The overall design is clean and contemporary, with a focus on light and space.

A GRAND ENTRANCE
WITH EVERY ARRIVAL

WHERE WORLD-CLASS
ART WELCOMES YOU HOME



WHERE BEAUTY IS ALWAYS
THE BACKDROP



THE PERFECT START
TO EVERYDAY





EFFORTLESS VERSATILITY
FOR EVERY SPECIAL
MOMENT AT HOME



SPHINX, MYTHOLOGICAL CREATURE

A DAZZLING EXAMPLE OF THE ARCHAIC SCULPTURE THAT BLOSSOMED IN THE GREEK WORLD OF THE 7TH-6TH CENTURY BCE, THIS SPHINX ALREADY ENCAPSULATES THE AESTHETIC REVOLUTION OF THE NEXT CENTURY IN EMBRYONIC FORM.



A GIRL BLOWING ON A BRAZIER -
PAINTING BY GEORGES DE LA TOUR

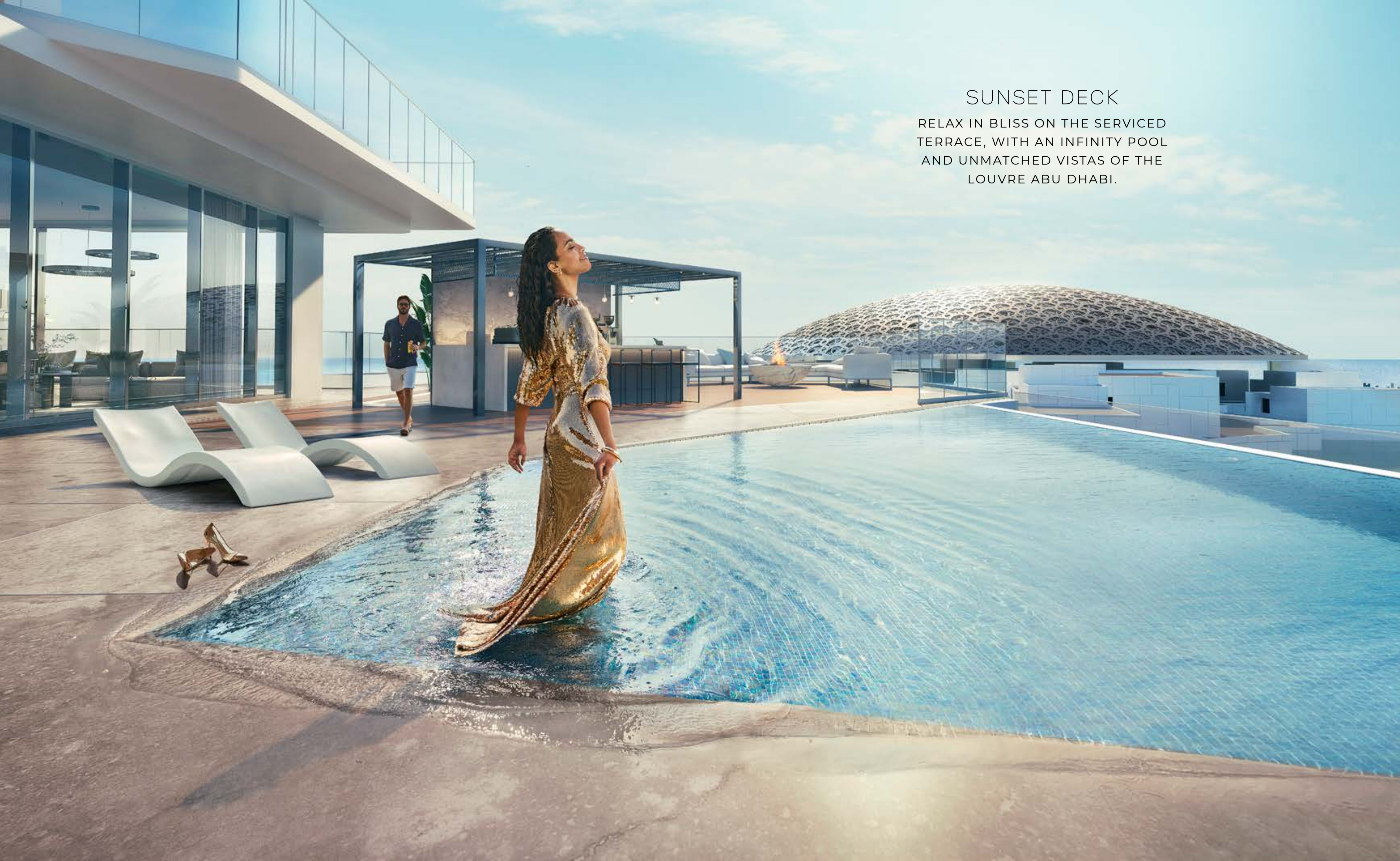
LIFE ENRICHED IN EVERY MOMENT

BE IMMERSSED IN A WORLD OF WONDER AND PICTURESQUE
MOMENTS. FROM PANAROMIC VIEWS ON THE SUNSET DECK TO THE
QUINTESSENTIAL RETREAT AT LE SALON DÉTENTE.



SUNSET DECK

RELAX IN BLISS ON THE SERVICED
TERRACE, WITH AN INFINITY POOL
AND UNMATCHED VISTAS OF THE
LOUVRE ABU DHABI.





CINEMA PRIVÉ

HAVE A WORLD OF ENTERTAINMENT
ALL TO YOURSELF IN OUR 5-STAR
RESIDENTIAL THEATRE



LE SALON DÉTENTE
HOST MEETINGS IN OUR BUSINESS
LOUNGE WHERE WORK FLOWS BOTH
SEAMLESSLY AND LUXURIOUSLY

CREATIVITÉ ROOM
A PLACE FOR YOUNG MINDS TO WANDER
AND GROW, WHILE OVERLOOKING A
WONDER OF THE WORLD



TERRACE DE JARDIN

RELAX ON THE GARDENED TERRACE,
WHERE GREENERY AND SERENITY ARE
INTERTWINED IN EVERY MOMENT



SALLE DE JEUX

BE ENTERTAINED IN EVERY WAY,
FROM EXPANSIVE SCREENS OF
FAVOURITE SPORTS, TO CASUAL
AFTERNOON GAMES



HERACLES BATTLING THE NEMEAN LION

CA. 520 BCE

THE COMBAT BETWEEN HERACLES AND THE NEMEAN LION, THE FIRST OF HIS TWELVE LABOURS, IS SEEN IN BLACK FIGURES ON THIS KRATER. THE DEPICTION CAPTURES THE TENSION OF THE FIGHT BETWEEN THE GREEK HERO AND THE SUPPOSEDLY INVULNERABLE ANIMAL. AFTER HIS VICTORY, HERACLES SKINNED THE WILD BEAST AND INHERITED ITS STRENGTH AND FEROCITY ALONG WITH THE PELT. THIS RECURRING THEME IN GREEK ART IS INTERPRETED AS THE TRIUMPH OF CIVILISATION OVER THE WILDERNESS.



WELLBEING BEGINS HERE

INDULGE MIND AND BODY IN OUR BIEN-ÊTRE CENTRE,
WHERE REFRESHING SWIMMING POOL WATERS FLOW FROM
THE ELEVATED TERRACE, OUT TOWARDS LOUVRE ABU DHABI
AND THE MAJESTIC CITY SKYLINE.

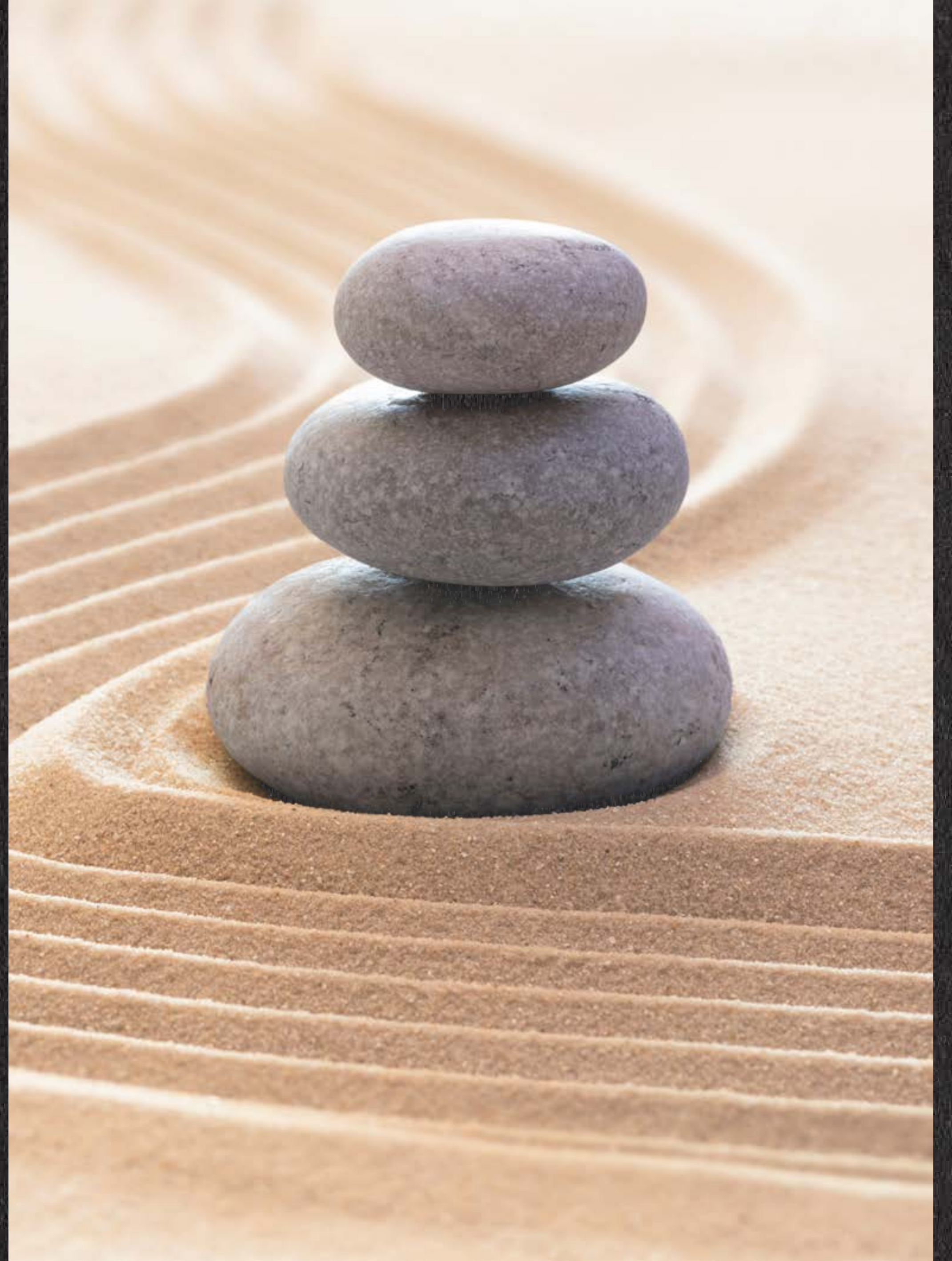
INFINITY POOL

SAUNA

YOGA & PILATES STUDIO

FITNESS CENTER

STATE-OF-THE-ART GYM EQUIPMENT



TAKE IN THE BEAUTY ON
SO MANY LEVELS



LE GYM

ENHANCE YOUR ENERGY LEVEL WITH
A FITNESS CENTER THAT STIMULATES
THE BODY AND THE MIND



EVERY DAY MADE EFFORTLESS

LET LIFE FLOW SEAMLESSLY FROM ONE MOMENT TO THE NEXT, FACILITATED BY A COMPREHENSIVE RANGE OF BESPOKE SERVICES, READY AT YOUR CONVENIENCE.

24/7 CONCIERGE

CHEF PRIVÉ

PERSONAL STYLIST

PET CONCIERGE

ART CONSEILLER





CHEF PRIVÉ

DELIGHT YOUR GUESTS WITH
HAUTE CUISINE IN THE COMFORT
OF YOUR HOME

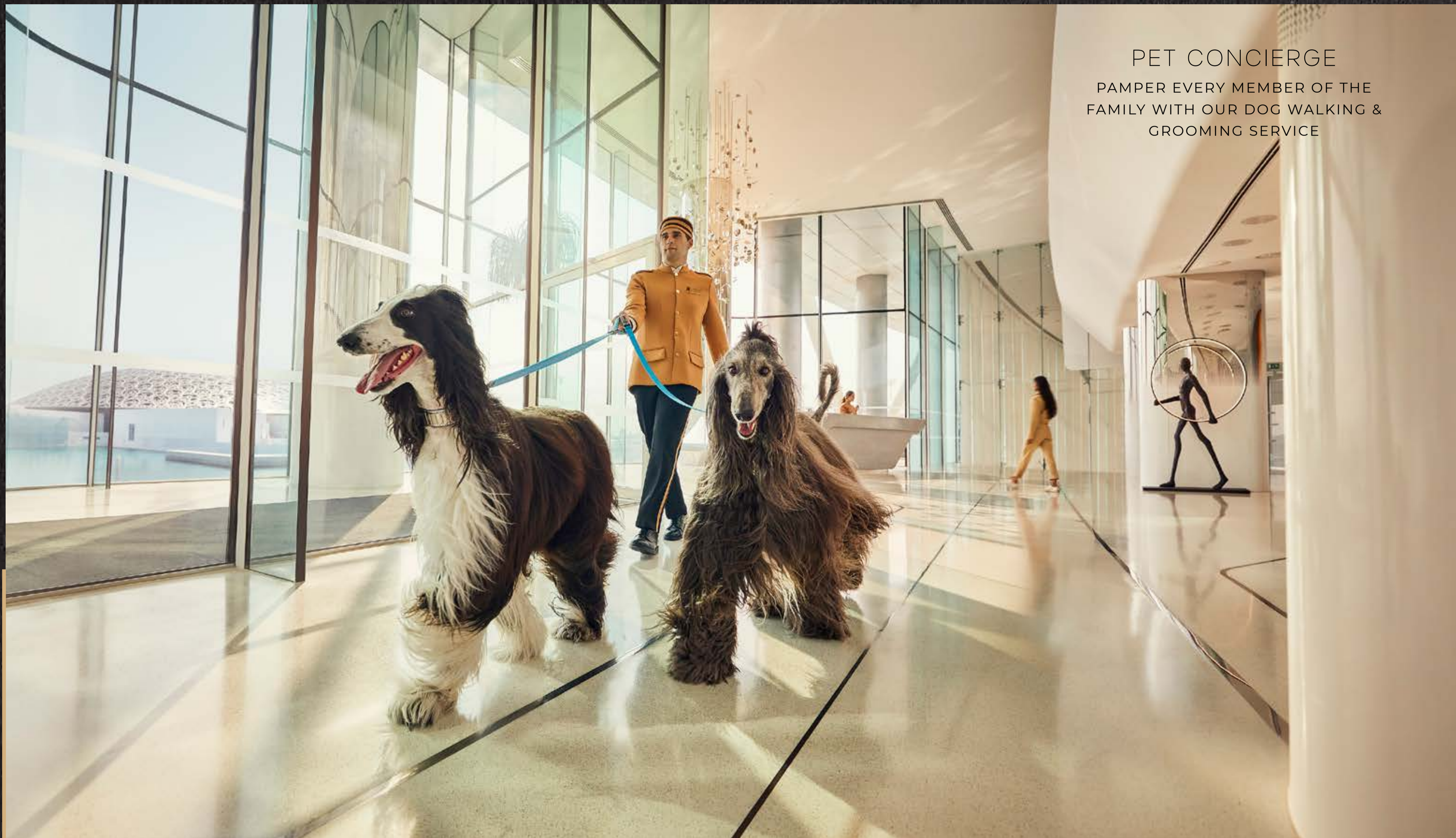


PERSONAL STYLIST
HOST SHOPPING SPREES IN YOUR
OWN WARDROBE

اللويس ابوباصي
LOUIS ABU BASSI
Residences

PET CONCIERGE

PAMPER EVERY MEMBER OF THE
FAMILY WITH OUR DOG WALKING &
GROOMING SERVICE



AMENITIES & SERVICES

WELLNESS

WELLBEING CENTER, INCLUDING
GYM, SAUNA, WITH DIRECT VIEWS
OF LOUVRE ABU DHABI

MEDITATION LAWNS

YOGA AND PILATES STUDIOS

RECREATION & ENTERTAINMENT

SUNSET DECK WITH
UNINTERRUPTED VIEWS
OF LOUVRE ABU DHABI &
JUICE BAR POOL AREA

MUSEUM-VIEW LOUNGE WITH
GAMES ROOM, COFFEE
STATION, TABLE TENNIS,
AND BILLIARDS

LE SALON DÉTENTE LOUNGE
WITH SOCIALISING AREA, LIBRARY,
SALON, PRIVATE MEETING ROOMS
AND CO-WORKING SPACES

CREATIVITÉ ROOM
INDOOR KIDS' PLAY AREA

CINEMA PRIVÉ, 5-STAR
RESIDENTIAL THEATRE

SERVICES

24/7 CONCIERGE SERVICE

VALET SERVICE, DOORMAN & BELL BOY

ART CONSEILLER

PERSONAL FITNESS TRAINING

CATERING & EVENT PLANNING

RESERVATION ASSISTANCE FOR
RESTAURANTS, TRAVEL, AND CAR
RENTAL

PRE-OCCUPATION PROVISIONS
FOR GROCERIES, DELIVERIES AND
REFRIGERATOR STOCKING

PACKAGE/COURIER DELIVERY

PET SPA & GROOMING

COMPLIMENTARY SHOPPING BAG DROP
OFF TO APARTMENTS

HOUSEKEEPING

LAUNDRY & DRY-CLEANING

SMART-HOME PACKAGE

* SOME OF THE ABOVE SERVICES ARE SUBJECT TO ADDITIONAL COSTS AND WILL BE RENDERED THROUGH AFFILIATE PARTNERS

SUSTAINABILITY AT YOUR DOORSTEP

SUSTAINABILITY IS AT THE CORE OF EVERYTHING WE DO. EVERY PIECE OF ARCHITECTURE HAS BEEN DESIGNED AND CONSTRUCTED TO PEARL REQUIREMENTS – THE GREEN BUILDING RATING SYSTEM THAT'S PART OF ABU DHABI'S SUSTAINABLE DEVELOPMENT INITIATIVE, ESTIDAMA.

BUILT FROM ETHICALLY SOURCED, NATURAL MATERIALS, OUR HOMES MAKE A POSITIVE ENVIRONMENTAL IMPACT. WE'RE ALSO PROMOTING ECO-CONSCIOUS LIVING IN THE COMMUNITY, WITH GREEN SPACES, SHADED COMMUNAL AREAS AND COVERED WALKWAYS BETWEEN DISTRICTS THAT MAKE IT PLEASANT TO STAY OUTDOORS AND BE ACTIVE.

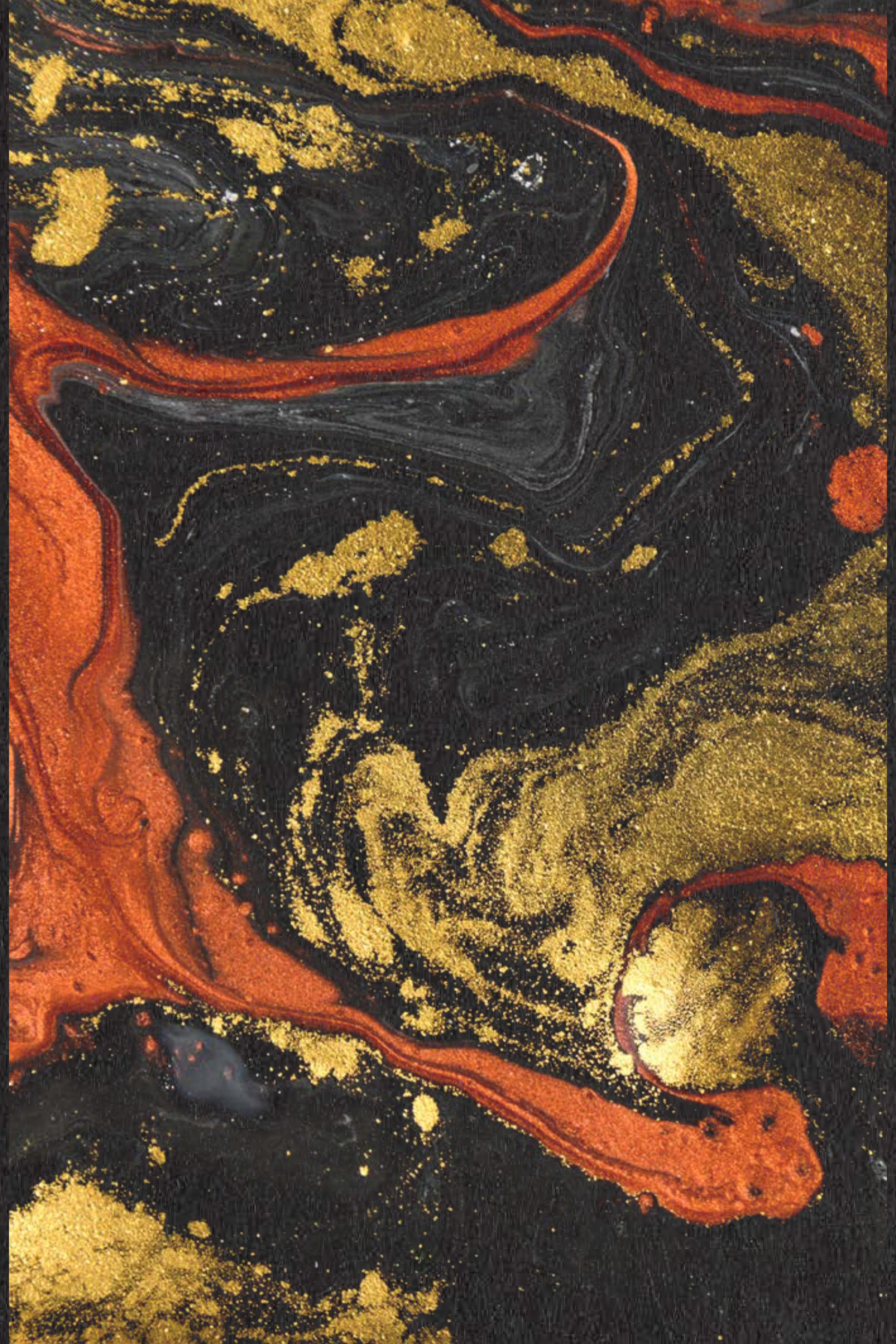


EVERY INCH AN ARTWORK

The Louvre Abu Dhabi Residences is the embodiment of class and worldly charm.

The living experience evokes a sense of sophistication, elevated by unique artworks punctuated throughout the residences. Floor-to-ceiling windows frame the uninterrupted views of the Louvre Abu Dhabi and the Arabian Gulf.

World-class home amenities are complemented with marble finishes and metallic accents that exude prestige, exclusivity and timeless style.



START THE DAY FRESH
WITH EXCEPTIONAL FINISHES





LIGHT PREMIUM

TAUPE AND CREAMY UNDERTONES TO BRING
WARMTH, ADDED RICHNESS AND VERSATILITY
TO ANY SPACE.



DARK PREMIUM

A COHESIVE PALETTE OF COOL NEUTRALS LIKE
CHARCOAL WITH SLATE GREY UNDERTONES FOR
A BOLD STATEMENT.



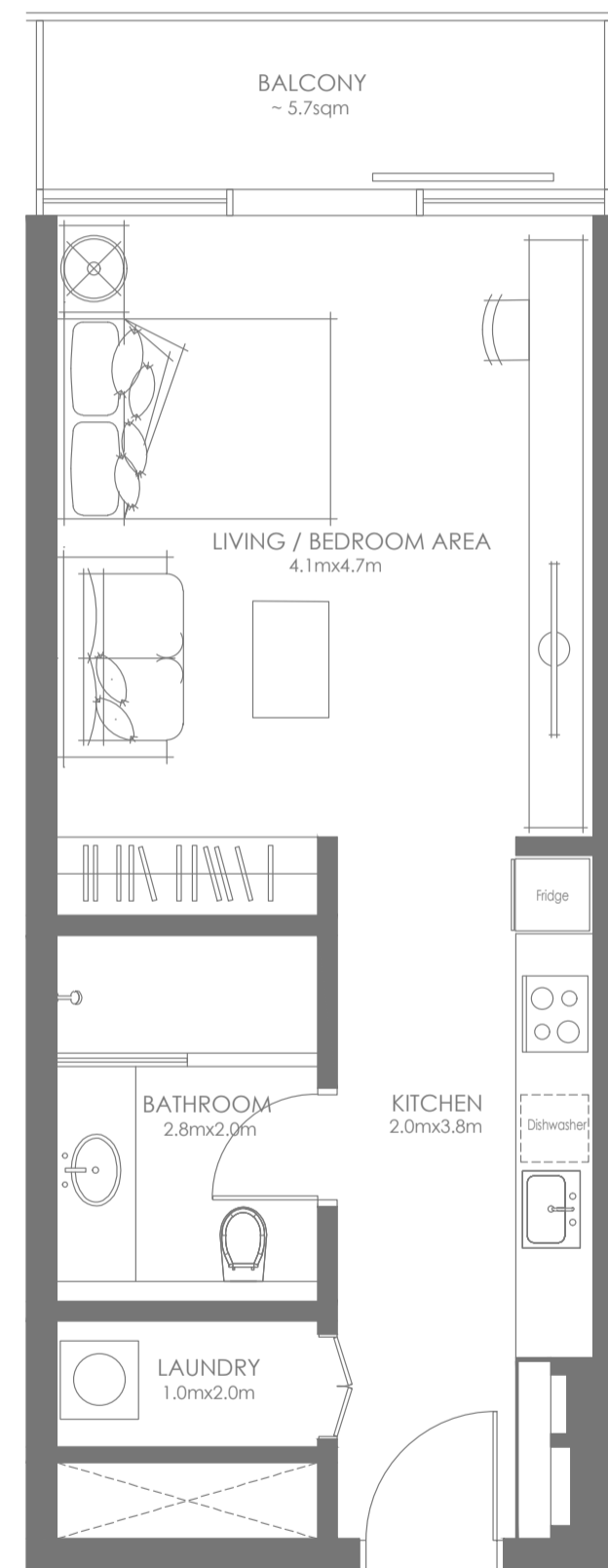
A WELL-BEING
SANCTUARY FOR YOUR
SELF-CARE NEEDS





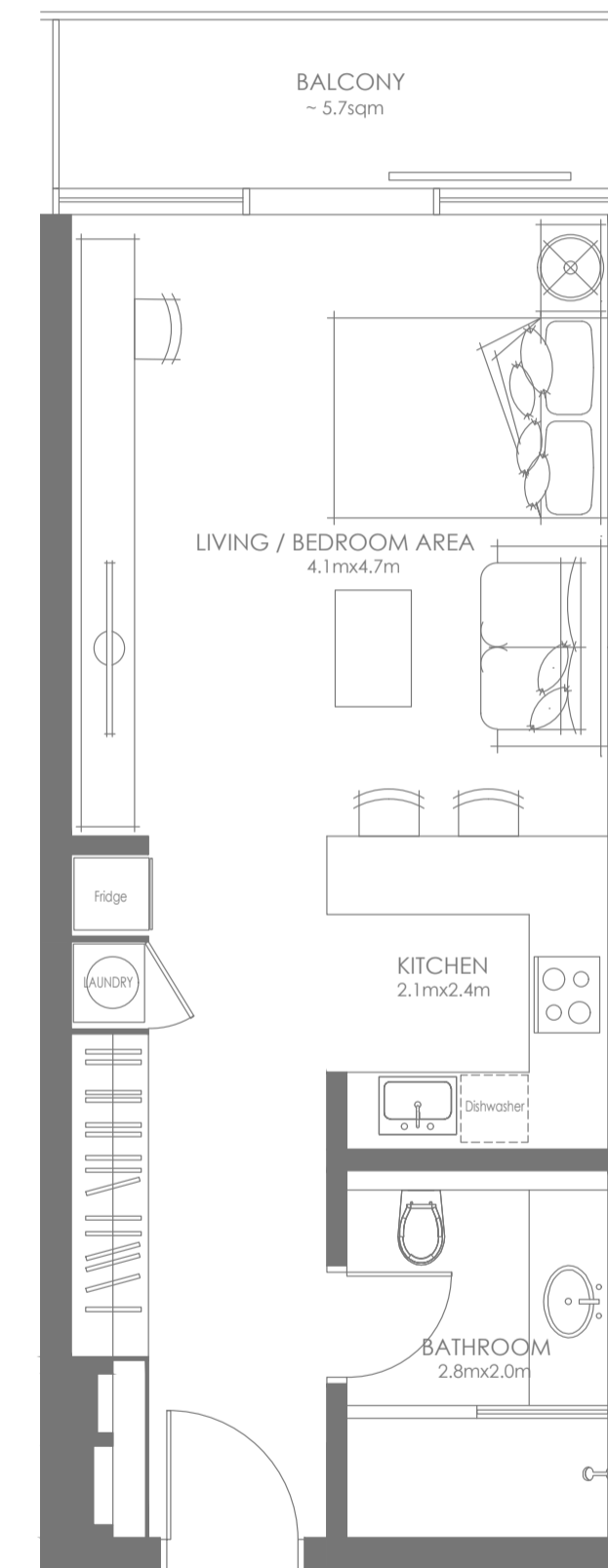
OPEN KITCHEN AND LIVING
SPACES TO SEAMLESSLY
ENJOY EACH MOMENT

STUDIO — TYPE A



Disclaimer: This plan is reproduced for illustrative purposes as an example of a typical plot layout and Aldar makes no representation of warranty in relation to any of the information shown.

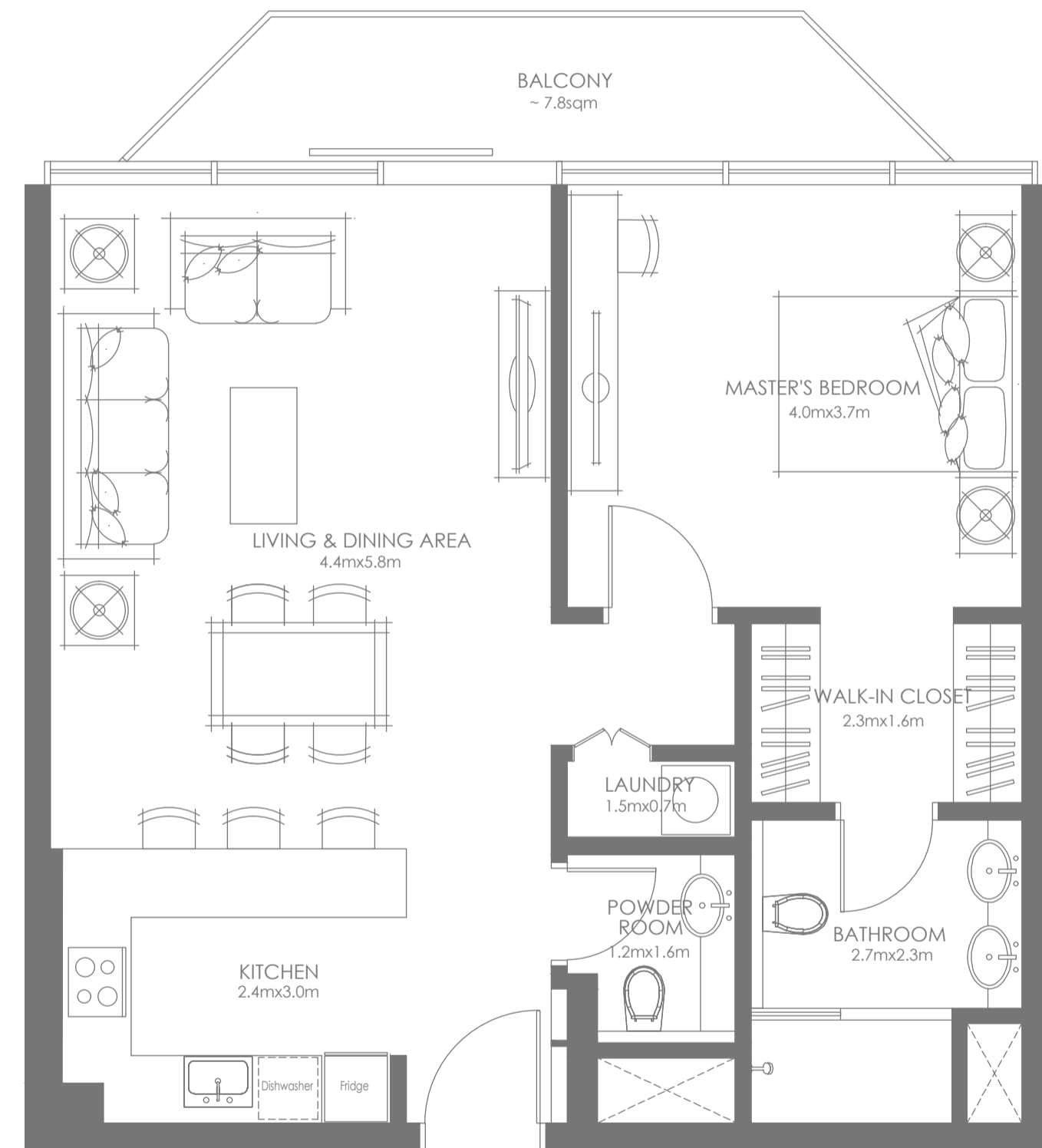
STUDIO — TYPE B



Disclaimer: This plan is reproduced for illustrative purposes as an example of a typical plot layout and Aldar makes no representation of warranty in relation to any of the information shown.

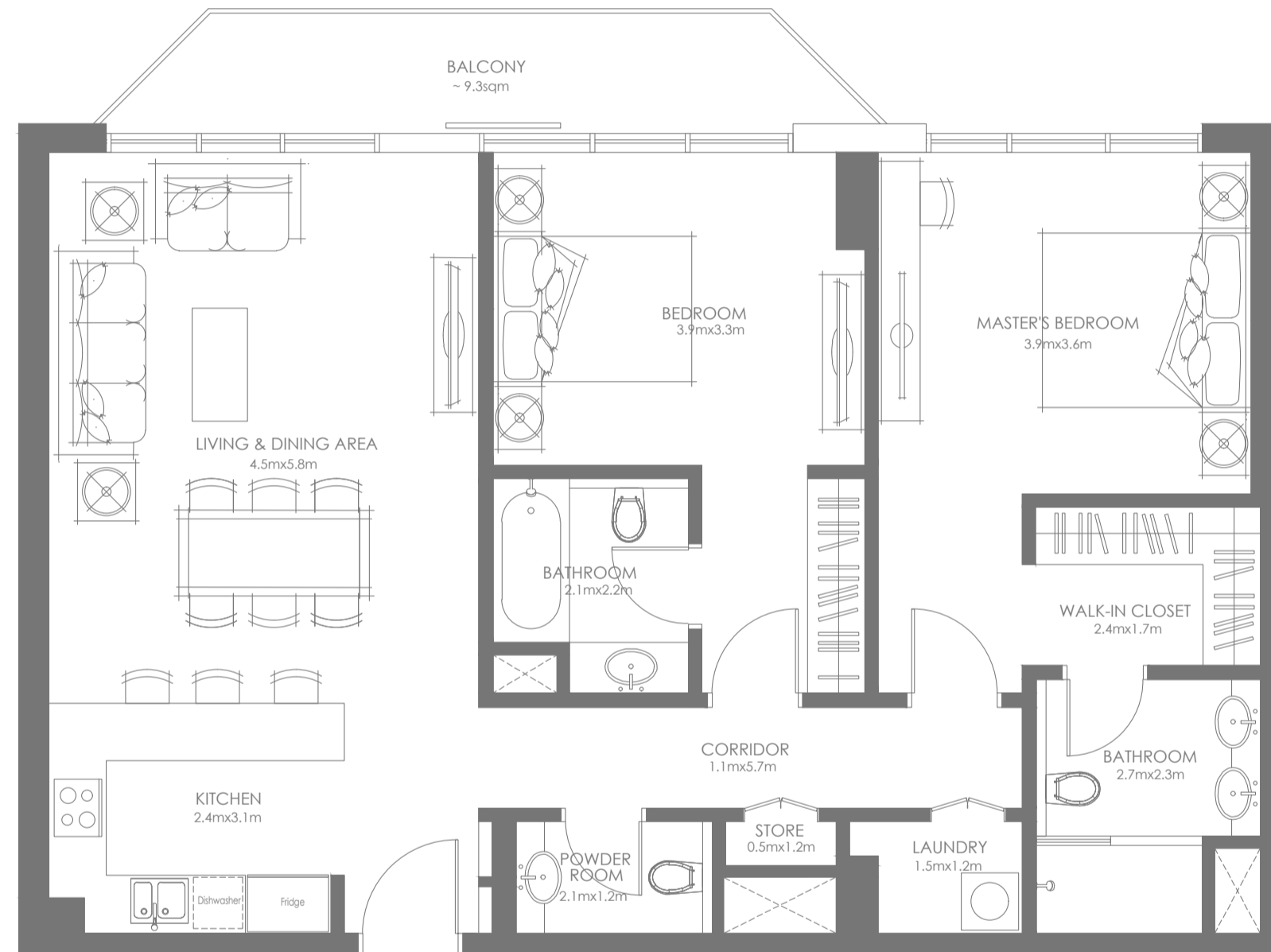


1-BEDROOM – TYPE A



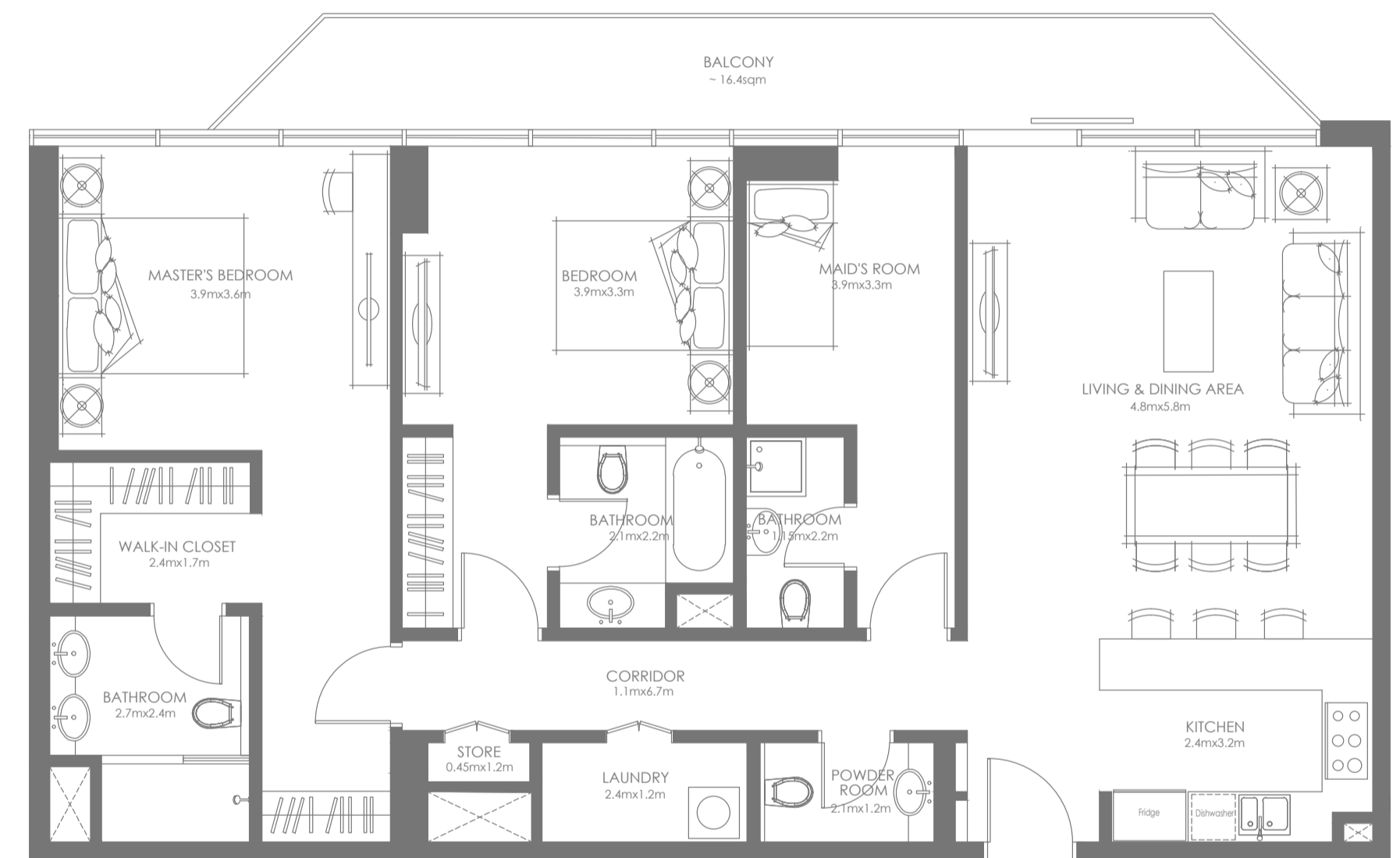
Disclaimer: This plan is reproduced for illustrative purposes as an example of a typical plot layout and Aldar makes no representation of warranty in relation to any of the information shown.

2-BEDROOMS TYPE A



Disclaimer: This plan is reproduced for illustrative purposes as an example of a typical plot layout and Aldar makes no representation of warranty in relation to any of the information shown.

2-BEDROOMS + MAID'S ROOM TYPE B

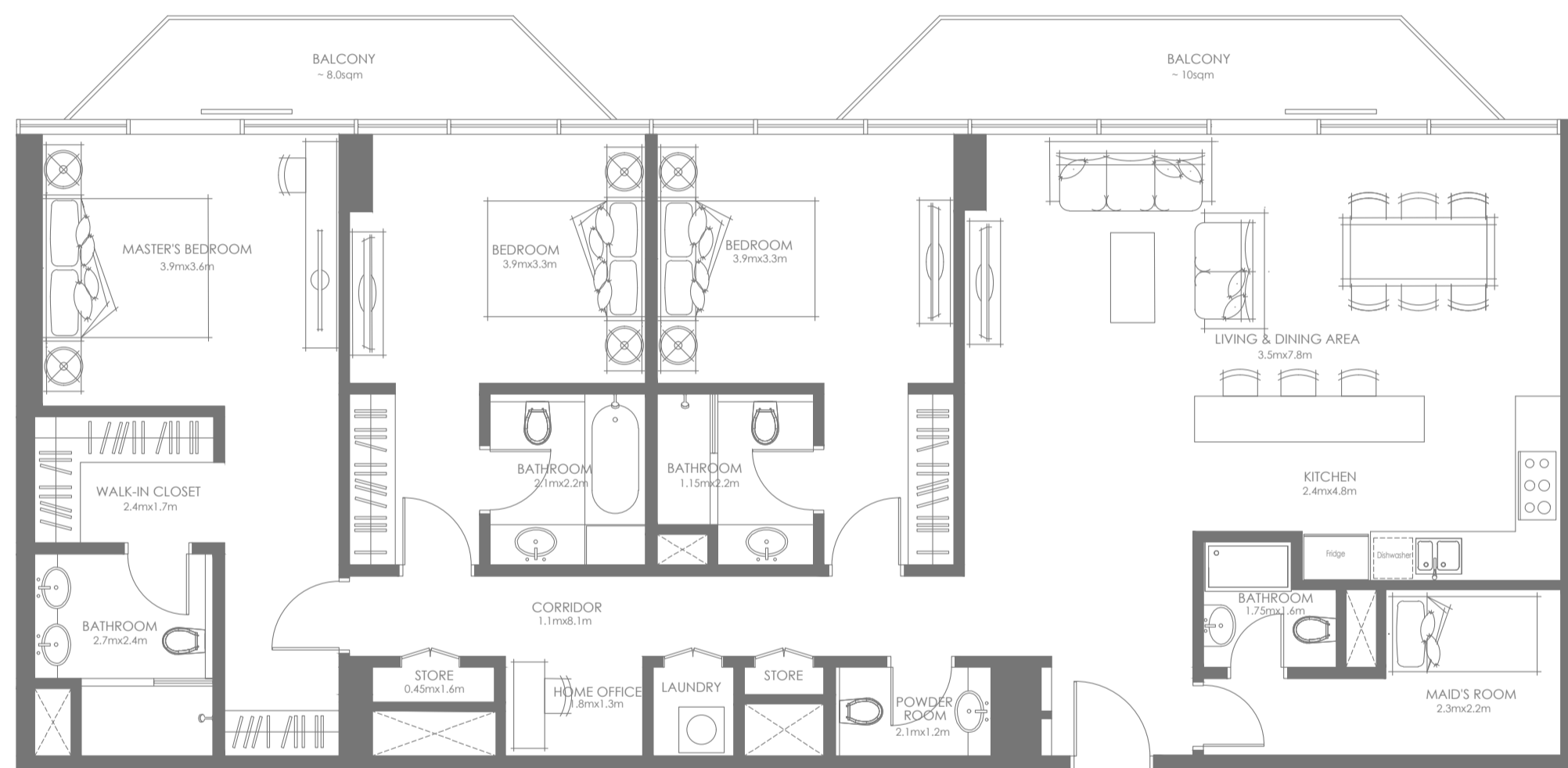


Disclaimer: This plan is reproduced for illustrative purposes as an example of a typical plot layout and Aldar makes no representation of warranty in relation to any of the information shown.



SCULPTED ELEGANCE ON
EVERY SURFACE

3-BEDROOMS + MAID'S ROOM TYPE A



Disclaimer: This plan is reproduced for illustrative purposes as an example of a typical plot layout and Aldar makes no representation of warranty in relation to any of the information shown.

A HOME FOR LIFE

WITH A UAE GOLDEN VISA

INVESTING IN A PROPERTY AT LOUVRE ABU DHABI RESIDENCES
GRANTS ELIGIBILITY TO APPLY FOR A UAE GOLDEN VISA, SO YOU
CAN CALL THE COUNTRY HOME FOR THE LONG TERM.





MUSEUM PRIVILEGES

ENJOY A WORLD OF PRIVILEGES
WITH THE 'GROVE CIRCLE'
MEMBERSHIP, GRANTING
COMPLIMENTARY ACCESS TO
LOUVRE ABU DHABI

RESIDENTS WILL ALSO RECEIVE
F&B DISCOUNTS AND ACCESS TO
SELECT EXHIBITS, ART REVEALS,
AND ART CLASSES, AS WELL AS
AN EXCLUSIVE INVITATION TO AN
ANNUAL RESIDENT EVENT,
HOSTED AT LOUVRE ABU DHABI

AN EXHIBITION OF LIFE

THERE'S INSPIRATION IN EVERY INCH OF LOUVRE ABU DHABI RESIDENCES—AND OUTSIDE OF IT TOO. EXPLORE THE RICH CULTURAL LANDSCAPE AND THE STUNNING NATURAL BEAUTY OF THE SURROUNDING TROPICAL WATERS.

SAADIYAT GROVE – CULTURAL DISTRICT, SAADIYAT ISLAND

A BRAND-NEW SHOPPING, DINING AND ENTERTAINMENT HUB WHERE EVERY EXPERIENCE IS DESIGNED TO INSPIRE.

LOUVRE ABU DHABI – CULTURAL DISTRICT, SAADIYAT ISLAND

THIS ARCHITECTURAL MARVEL IS UNMISSABLE FROM ALMOST EVERY VIEWPOINT OF YOUR RESIDENCE. AND ITS PLETHORA OF STORIES OF HUMANITY THROUGH ART, ARE WAITING JUST MINUTES FROM YOUR FRONT DOOR.

MANARAT AL SAADIYAT – CULTURAL DISTRICT, SAADIYAT ISLAND

INSPIRE YOURSELF WITH A DAZZLING COLLECTION OF EXHIBITIONS AND WORKSHOPS.

SOUL BEACH – MAMSHA AL SAADIYAT, SAADIYAT ISLAND

A NEW PRIVATE BEACH FACILITY ON ABU DHABI'S STUNNING SAADIYAT ISLAND. SOUL BEACH IS A 1KM STRETCH OF PRIME SAADIYAT COASTLINE, TRAVEL BROCHURE VIEWS, AND MESMERISING BLUES.

INTERNATIONAL UNIVERSITIES

NEW YORK UNIVERSITY ABU DHABI AND CRANLEIGH ABU DHABI



SAADIYAT GROVE SALES CENTRE

Saadiyat Island, Next to Mamsha Al Saadiyat , Abu Dhabi

800 25327
sales@aldar.com

Working Hours
Sun - Thu
8:00 AM - 4:00 PM

ALDAR SQUARE

Yas Island, Next to Yas Mall, Abu Dhabi

800 25327
sales@aldar.com

Working Hours
Sun - Thu
8:00 AM - 4:00 PM

DUBAI SALES CENTRE

Al Manara, Sheikh Zayed Road, Dubai

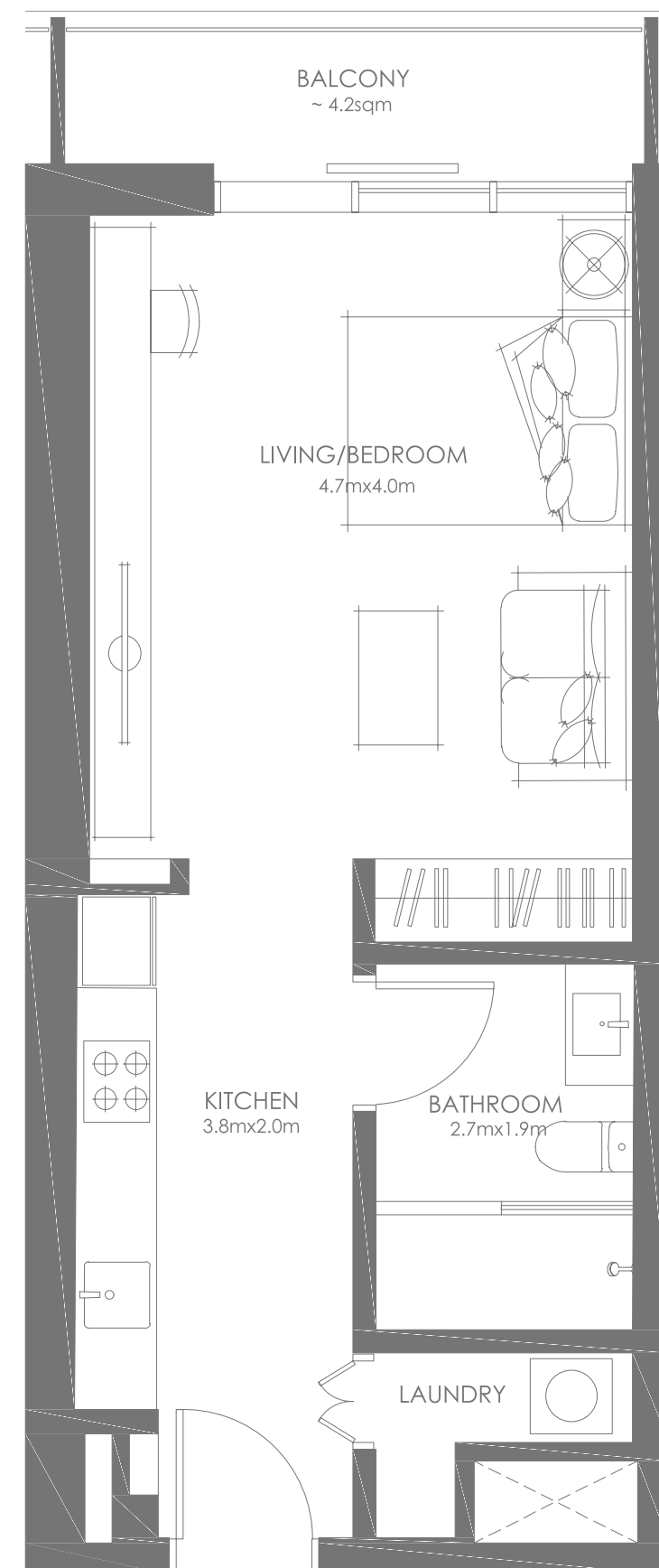
800 25327
International: **+971 2 810 6400**
sales@aldar.com

Working Hours
Sun - Thu
8:00 AM - 4:00 PM

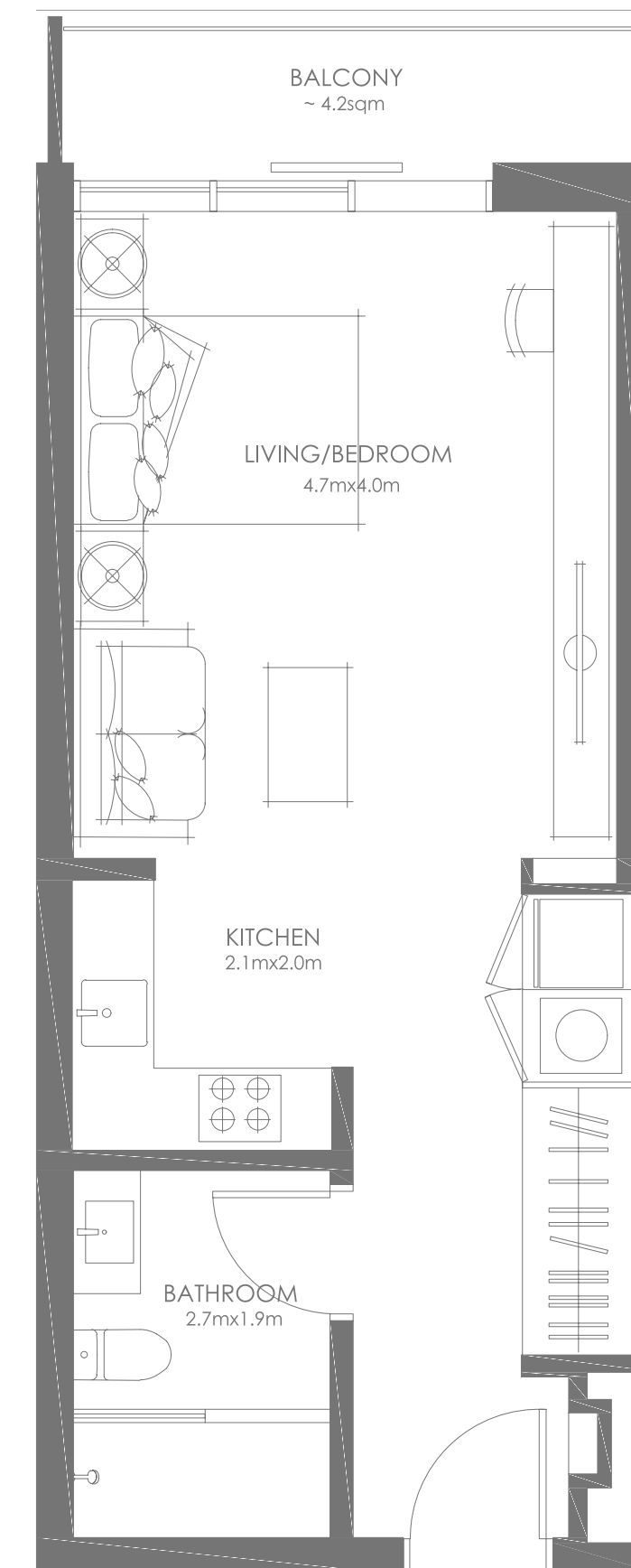


ALDAR.COM
800 ALDAR

GROVE MUSEUM VIEWS

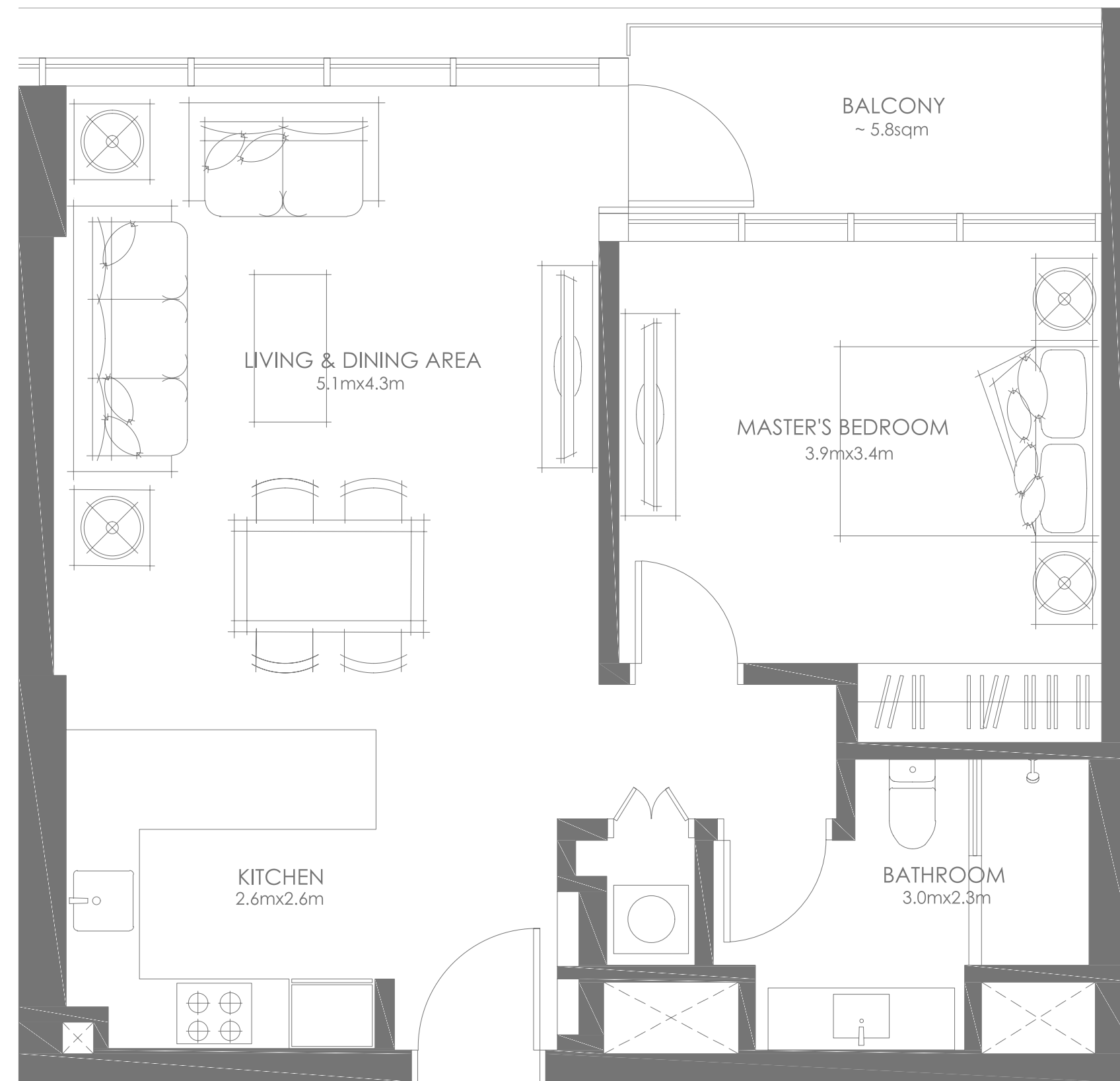


STUDIO - TYPE 1



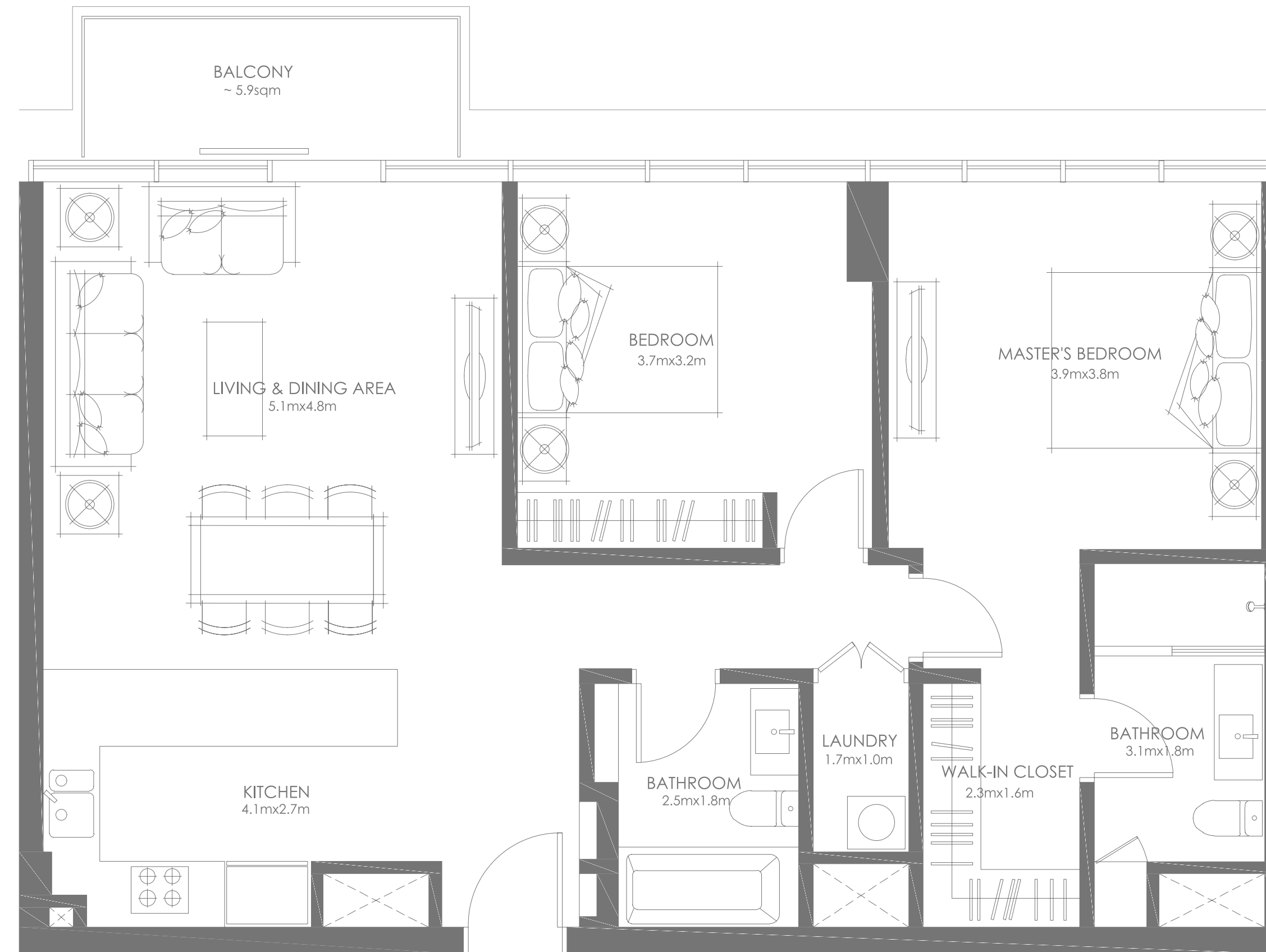
STUDIO - TYPE 2

GROVE
MUSEUM
VIEWS



1 BEDROOM

GROVE MUSEUM VIEWS



2 BEDROOMS TYPE - 1

GROVE MUSEUM VIEWS



2 BEDROOMS TYPE - 2